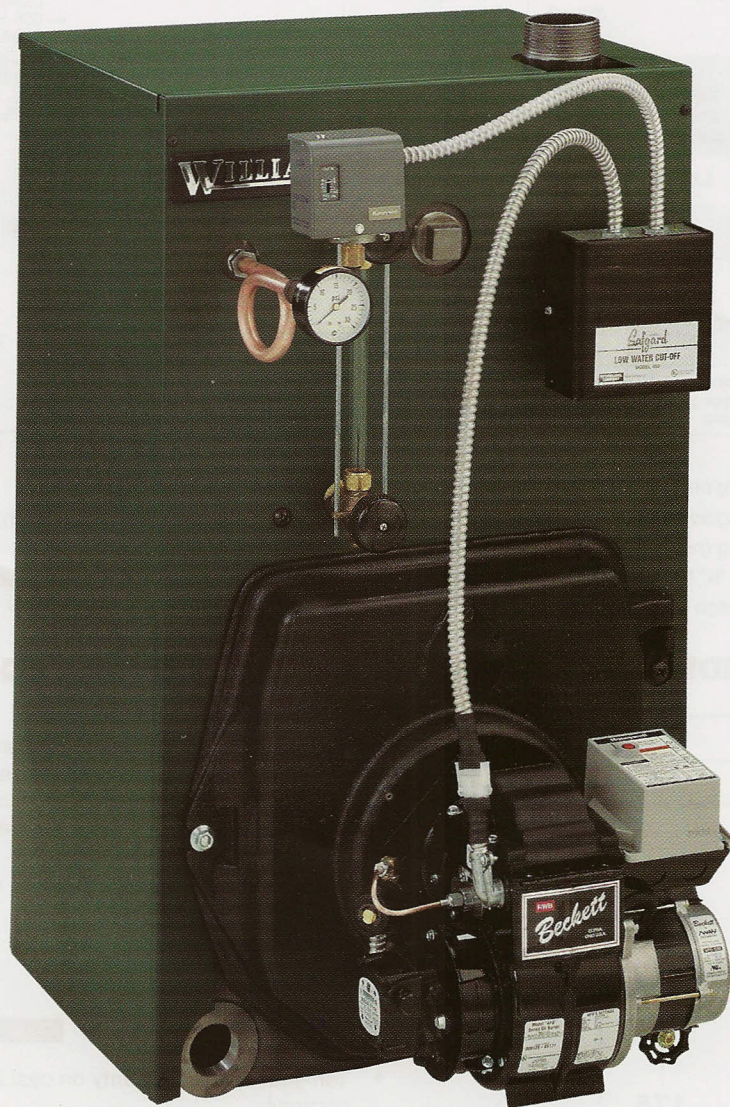


OSB

Oil-fired Steam Boilers

- ☐ Factory tested
- ☐ Easy service
 - Swing-away burner door
 - Low draft loss
 - Top access cleanout cover
 - Plug-in wiring harness
- ☐ High efficiency oil burner
 - Flame retention head design
 - Solenoid valve
 - PSC motor
 - Solid state ignitor
- ☐ Rear flue outlet
- ☐ Cast iron sections
- ☐ Insulated heavy-gauge steel jacket
- ☐ Limited lifetime warranty

- ☐ Factory-packaged
- ☐ 1.00 to 2.00 GPH Input
- ☐ Optional tankless heater



Williamson

RATINGS



Boiler model number	I=B=R burner capacity	DOE heating capacity	Net I=B=R steam ratings		DOE seasonal efficiency	Flue outlet size	Minimum I=B=R Chimney (x 15' high)		Boiler water content	Draft loss through boiler
	GPH ①	MBH ②	Sq. Ft. ③	MBH ③	% AFUE	(Round)	Rectangle	Round	(Gallons @ normal waterline)	Inches W.C.
OSB-3-100	1.00	116	363	87	82.1	7"	8" x 8"	6"	10.7	.000
OSB-4-110	1.10	129	404	97	82.0	7"	8" x 8"	6"	12.5	.010
OSB-4-125	1.25	145	454	109	81.7	7"	8" x 8"	6"	12.5	.010
OSB-5-135	1.35	158	492	119	81.5	7"	8" x 8"	7"	14.2	.010
OSB-5-150	1.50	175	546	131	81.4	7"	8" x 8"	7"	14.2	.010
OSB-6-175	1.75	204	638	153	81.1	7"	8" x 8"	7"	16.0	.000
OSB-6-200	2.00	232	725	174	81.4	7"	8" x 8"	7"	16.0	.015

① Based on 140,000 Btu/h per gallon, #2 fuel oil.

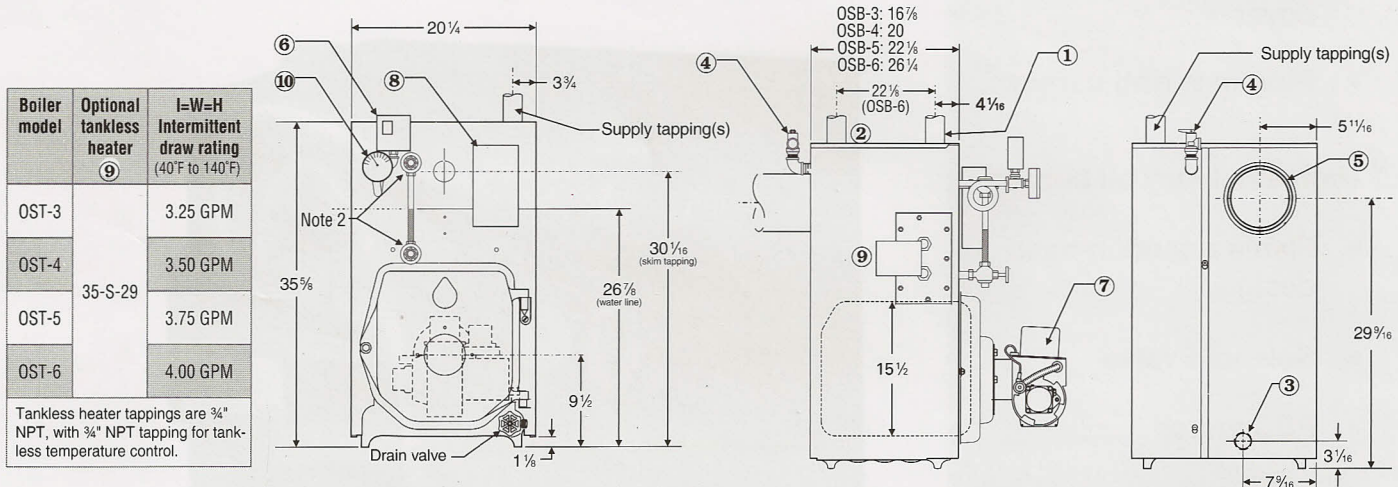
② Based on standard test procedures prescribed by the United States Department of Energy, with combustion conditions of 13% CO₂ and -0.02" W.C. draft.

③ Net I=B=R ratings are based on net installed radiation of sufficient quantity for the requirements of the building and nothing need be added for normal piping and pickup. Ratings are based on a piping and pickup allowance of 1.333. Additional allowance should be made for unusual piping and pickup loads.

DOE

DIMENSIONS

ALL DIMENSIONS IN INCHES



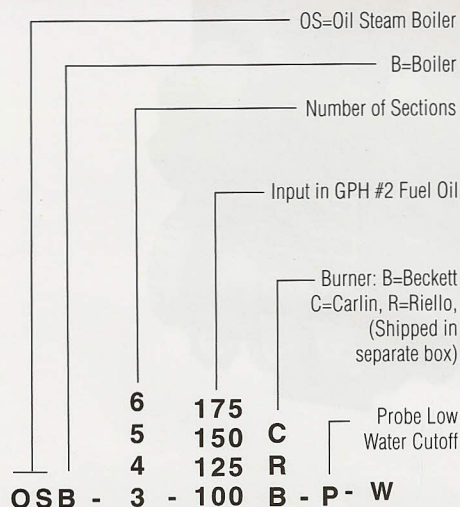
- ① Supply piping one (note 1)
- ② Supply piping two, OSB-6 only (note 1)
- ③ Return piping (note 1)
- ④ Relief valve, 3/4" NPT
- ⑤ Vent connection — 7" diameter

- ⑥ Pressure limit control
- ⑦ Oil burner (shipped in separate carton)
- ⑧ Probe-type low water cutoff
- ⑨ Tankless coil & temp. control (when used)
- ⑩ Pressure gauge

Note 1: Boiler supply tappings are 2 1/2" NPT. Return tapping is 1 1/2" NPT on all boiler sizes. Install one 2 1/2" supply riser for models OSB-3, OSB-4 and OSB-5; two 2 1/2" supply risers for size OSB-6.

Note 2: If field-installing a float low water cutoff, it must be installed in the gauge glass tappings. No other tappings are usable for float low water cutoffs.

ORDER CODE



EQUIPMENT

- Factory tested
- Factory-assembled cast iron section assembly, including aluminized steel flue collector, swing-away burner mounting door, refractory blanket and recessed target wall in combustion chamber
- Flame-retention oil burner (Beckett AFG, or Carlin EZ, or Riello)
- High limit pressure control
- Probe low water cutoff

- Pressure gauge
- Siphon
- Gauge glass, gauge cocks and guards
- 15 PSIG ASME relief valve
- Drain valve
- Barometric damper

OPTIONAL

- Two-stage oil burner fuel unit
- Tankless heater, shipped in separate carton

WARRANTY

- Ten-year limited warranty on cast iron sections
- 3-year limited warranty on parts
- Optional 5- or 10-year parts and labor warranty



Williamson

8201 W. Calumet Road • Milwaukee, WI 53223

www.williamson-thermofo.com Form W-007 (03/04)