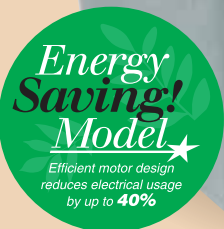


Liberty Pumps®

Model 405



**Commercial
Drain Pump
High-Head
High Temperature**

**1/2 hp
3/8" solids-handling**

**Featuring QuickTree®
technology for easy
switch access!**

Features:

- Factory pre-assembled, ready to install
- Fully automatic operation
- Handles fluid temperatures to 180 degrees F. (not designed for use with chemicals.)
- Separate access cover for easy switch inspection
 - 2" inlet
 - 2" vent
 - 2" discharge
- Integrally molded rubber gasket for a superior gas-tight seal

Applications Include:

Bar sinks, laundry trays, multi-compartment utility sinks, dehumidifiers, dishwashers and gray wastewater drainage below gravity lines

innovate. evolve.

MODEL 405 & 405HV

COMMERCIAL DRAIN PUMP

FEATURES:

- Factory pre-assembled.
- Fully automatic operation.
- QuickTree® technology allows quick inspection and removal of float switch without disconnecting the plumbing.
- Oil-filled motor with thermal-overload protection.
- Corrosion-resistant polyolefin basin with integrally molded rubber gasket for a superior gas-tight seal.
- Maintenance-free, permanently lubricated sealed bearings.
- 10' power cord with ground plug
- 3/8" Solids-Handling
- 1/2 hp

Maximum fluid temperature 180 degrees F.

Not intended for use with chemicals.

APPLICATIONS:

- Laundry Trays
- Commercial Sinks
- Bar Sinks
- Dishwashers
- Dehumidifiers
- Wherever gray wastewater drainage is needed below gravity lines.

Specifically designed for higher head applications such as commercial and industrial buildings.

DIMENSIONAL DATA:

Weight: 16 LBS.

Major Height: 14-1/8"

Major Width: 13-3/4"

Inlet Height (from bottom of basin): 12-5/8"

Total Capacity: 5.5 Gallons

Inlet Size: 2"

Discharge Size: 2"

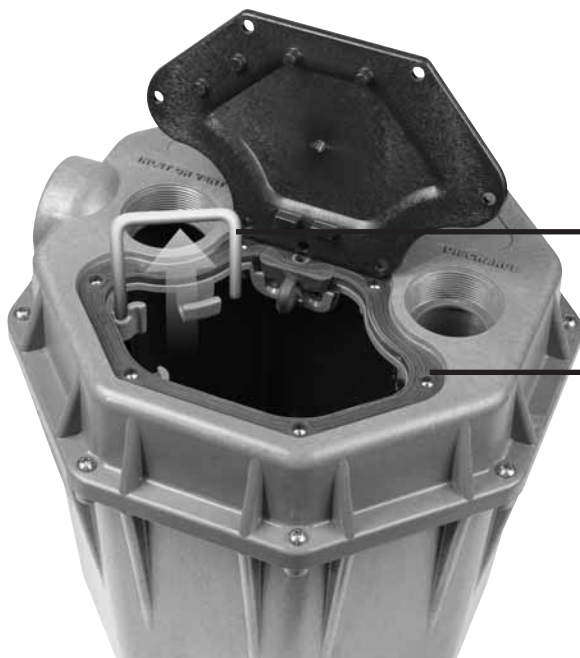
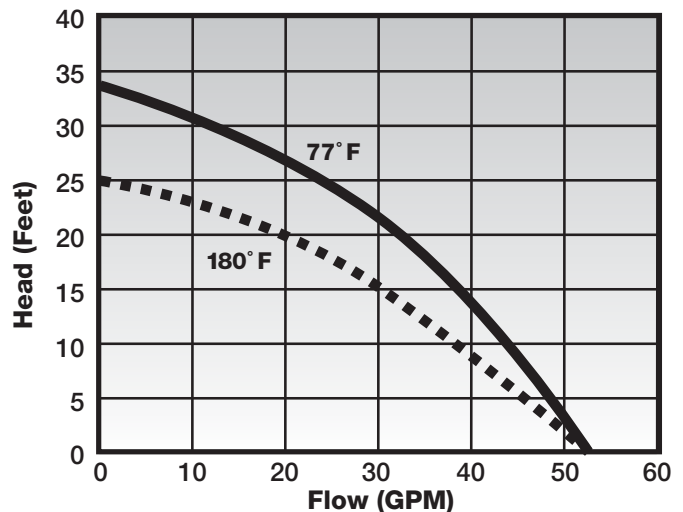
Vent Size: 2"

MOTOR SPECIFICATIONS:

MODELS	HP	VOLTS	HZ	AMPS
405	1/2	115	60	7.3
405HV	1/2	208-230	60	3.5

3450 RPM. Oil filled, Thermally Protected

PERFORMANCE CURVE



QuickTree technology allows easy removal of float without disconnecting plumbing or pulling the pump

Heavy-Duty integrally molded rubber gasket provides a superior seal. 10' stack test approved



Specifications are subject to change without notice.